

HEADLINE FIGURES

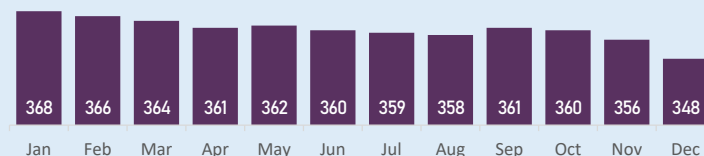
Number of children in care on the last day of December

322



Target: 370

Target: below 307



Staffing

	Establishment	Average Caseload	Change	Performance
Family Safeguarding Qualified social workers	31.5	15	▲	-
Children in Care Qualified social workers	17	17.5	▲	-
Leaving Care Personal Advisors	8	23	▲	-
Independent Reviewing Officers	9	67	-	-

Legal status of children in care

Full care order, 221

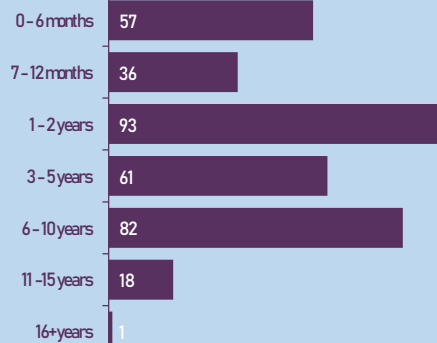
Freed adoption / placement order, 48

Voluntary agreement, 44

Interim care order, 33

Other, 2

Length of time children have been in care



Key

Change since previous month
Performance against target

▲ Improved
✓ Strong

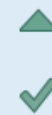
■ Stayed the same
! Acceptable

▼ Deteriorated
✗ Poor

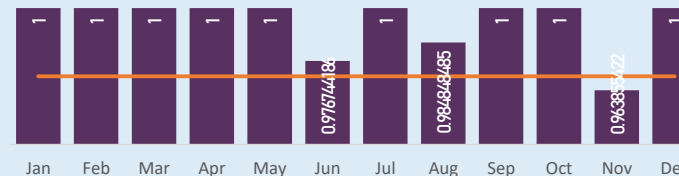
SERVICE STANDARDS

% of child in care reviews which were held on time (year to date, and during each month)

99%

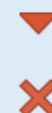


Target: above 97%

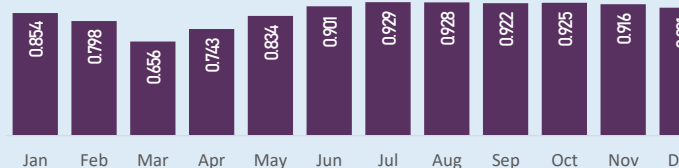


% of child in care statutory visits which were carried out on time (year to date, and during each month)

96.2%



Target: above 98%



PLACEMENTS

Placement stability

8.4%

Target: below 10.0%

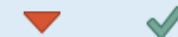


8.4% of children in Peterborough's care had 3 or more different placements in the last 12 months.

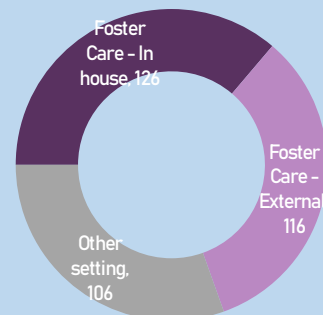
Out of those children who have been in care for over 2.5 years, 72.3% have been in their current placement for two or more years.

72.3%

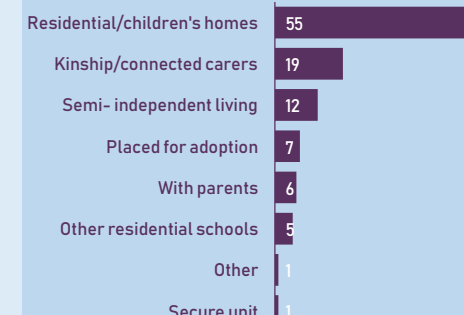
Target: above 68%



Type of placement of children in care



Other settings breakdown



This page is intentionally left blank